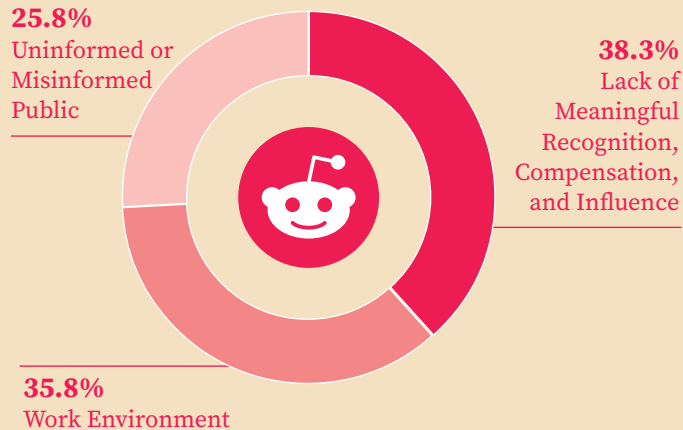


Are They Aligned? An Analysis of Social Media–Based Nurse Well-Being Concerns and Well-Being Programs

We sought to identify nurse concerns related to burnout and well-being through two data sources:

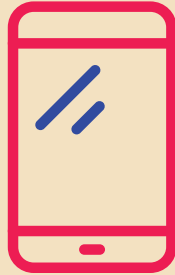
Social Media Nurse Comments
From Reddit (N=120)



Semistructured interviews about perceptions of factors contributing to burnout and well-being program initiatives with nine well-being leaders from seven different healthcare systems.



- The social media analysis revealed nurse concerns that well-being program leaders may not identify as factors contributing to lack of well-being.



- There is an opportunity to optimize our understanding of nurse concerns around well-being through social media, and an opportunity to better align nurse concerns with the focus of well-being programs.